

**NOTE BY THE DIRECTOR-GENERAL****MONTHLY FINANCIAL SITUATION REPORT AS AT 30 APRIL 2016**

1. At its Twentieth Session, the Conference of the States Parties requested the Director-General to provide detailed monthly updates about the overall financial situation, and particularly cash flow, to Member States (subparagraph 5(u) of C-20/DEC.6, dated 3 December 2015).
2. The cash balance of the OPCW General Fund was EUR 18.5 million as at 30 April 2016, substantially higher than the position as at 30 April 2015 (EUR 3.8 million), as a consequence of the continued payments of assessed contributions for 2016 by States Parties. The opening balance at the beginning of the period (1 April 2016) was EUR 20.2 million, which includes borrowings in 2015 of EUR 3.1 million from the special enterprise-resource-planning (ERP) fund. Total cash inflow for the month of April was EUR 3.0 million and total cash outflow for the month of April was EUR 4.7 million, representing operational disbursements.
3. Cash inflow includes assessed contributions, reimbursements of Article IV and V invoices, interest, and refunds of taxes and overpayments. Cash outflow includes disbursements of liquidated obligations committed to the Programme and Budget for 2015 and 2016, and refundable taxes.
4. The Technical Secretariat (hereinafter “the Secretariat”) projects that total cash requirements for 2016 are EUR 74.0 million, including reimbursements to the Working Capital Fund (WCF) and the special ERP fund, against which it projects that EUR 67.5 million would be collected before 31 December 2016.<sup>1</sup>
5. Additionally, the Secretariat notes that the final cash deficit for the financial year ending 31 December 2014, calculated in accordance with Financial Regulation 6.3, is estimated at around EUR 0.7 million.<sup>2</sup>

---

<sup>1</sup> This document has been prepared by the Secretariat for informal reference only. The projections/estimates do not purport to provide an accurate picture of the future events or any operational requirements of the Secretariat. The figures and information contained herein are based on past results and are therefore subject to variation and/or change.

<sup>2</sup> The amount (a negative EUR 680,232) has not yet been audited by the External Auditor of the OPCW and will be reported in the Financial Statements of the OPCW and the report of the External Auditor for the year ending 31 December 2015, scheduled to be issued in July 2016.



Annexes:

- Annex 1: Summary of Cash Flow and Balances as at 30 April 2016 (and 30 April 2015)
- Annex 2: Status of Assessed Contributions from Member States as at 30 April 2016
- Annex 3: Outstanding Reimbursements for Inspections Invoiced under Articles IV and V of the Chemical Weapons Convention as at 30 April 2016
- Annex 4: Cash Flow Forecast for 2016 and Average Cash Flow for 2013 – 2015
- Annex 5: Monthly and Annual Cash Flow Forecast as at 30 April 2016

## Annex 1

**SUMMARY OF CASH FLOW AND BALANCES  
AS AT 30 APRIL 2016 (AND 30 APRIL 2015)**

**TABLE 1: CASH FLOW**

General Fund	For the month of				For the year of 2016 (forecast) <sup>3</sup>
	January 2016	February 2016	March 2016	April 2016	
Opening balance	2,420,686	21,843,683	20,443,589	20,189,749	2,420,686
Cash inflow	25,243,922	8,178,373	5,324,075	3,005,081	67,469,793
Cash outflow	5,820,925	5,578,467	5,577,915	4,727,642	66,946,337
Closing balance before transfers	21,843,683	24,443,589	20,189,749	18,467,158	2,944,141
Transfer from/to Working Capital Fund	-	-4,000,000	-	-	-4,000,000
Transfer from/to Special ERP Fund	-	-	-	-	-3,100,000
Closing balance	21,843,683	20,443,589	20,189,749	18,467,158	-4,155,859

**TABLE 2: CASH BALANCE**

Fund	Balance	
	As at 30 April 2016	As at 30 April 2015
General Fund	18,467,158	3,846,186
Working Capital Fund <sup>4</sup>	4,153,449	4,173,257
Special ERP fund	4,262,959	7,864,449
Voluntary Fund for Assistance (Article X)	1,542,396	1,541,248
OPCW special accounts	1,358,581	8,588,631
OPCW trust funds	12,585,729	14,581,497
<b>Total</b>	<b>42,370,272</b>	<b>40,595,268</b>

<sup>3</sup> See footnote 1.

<sup>4</sup> A sum of EUR 19,332 was transferred to the special ERP fund from the WCF in 2015 in order to meet the amount approved by the Executive Council at its Seventy-Seventh Session (EC-77/DEC.4\*, dated 9 October 2014). Some of the interest earned in 2015 is included.

Annex 2

STATUS OF ASSESSED CONTRIBUTIONS FROM MEMBER STATES AS AT 30 APRIL 2016

TABLE 1: PERFORMANCE OF ASSESSED CONTRIBUTION PAYMENTS

	Assessed Contributions for 2015				Assessed Contributions for 2016	
	Number of Member States	Amount Received as at 30-4-15	Number of Member States	Amount Received as at 30-4-16	Number of Member States	Amount Received as at 30-4-16
Member States that have paid in full	67	21,721,610	124	62,370,716	74	35,776,220
Member States that have partially paid	22	8,085,534	14	42,205	15	4,061,238
Member States that have made no payment	101	-	54	-	103	-
<b>Totals</b>	<b>190</b>	<b>29,807,144</b>	<b>192</b>	<b>62,412,921</b>	<b>192</b>	<b>39,837,458</b>
<b>Assessment for the year</b>		<b>65,529,600</b>		<b>65,529,600</b>		<b>65,529,600</b>
<b>Collection rate</b>		<b>45.5%</b>		<b>95.2%</b>		<b>60.8%</b>

**TABLE 2: STATUS OF OUTSTANDING ASSESSED CONTRIBUTIONS FOR PRIOR AND CURRENT YEARS AS AT 30 APRIL 2016**

	State Party	1993-2015 Balance Outstanding	2016 Balance Outstanding	1993-2016 Total Outstanding
1.	Brazil	2,528,500	2,524,201	5,052,701
2.	Venezuela (Bolivarian Republic of)	837,283	377,013	1,214,296
3.	Iran (Islamic Republic of)	234,964	310,986	545,950
4.	El Salvador	215,527	9,244	224,771
5.	Dominican Republic	198,122	30,372	228,494
6.	Libya	188,687	82,533	271,220
7.	Colombia	170,943	212,606	383,549
8.	Nigeria	120,830	137,996	258,826
9.	Cuba	92,550	42,917	135,467
10.	Paraguay	53,539	9,244	62,783
11.	Kyrgyzstan	39,179	1,321	40,500
12.	Guinea	37,938	1,321	39,259
13.	Niger	32,761	1,321	34,082
14.	Democratic Republic of the Congo	27,461	5,282	32,743
15.	Yemen	26,615	6,603	33,218
16.	Bahamas	22,555	9,244	31,799
17.	Sudan	20,058	6,603	26,661
18.	Antigua and Barbuda	15,096	1,321	16,417
19.	Saint Vincent and the Grenadines	14,949	655	15,604
20.	Sierra Leone	14,301	655	14,956
21.	Dominica	14,161	655	14,816
22.	Gabon	13,138	11,225	24,363
23.	Comoros	12,957	655	13,612
24.	Central African Republic	12,898	655	13,553
25.	Nauru	12,884	655	13,539
26.	Nicaragua	12,755	2,641	15,396
27.	Djibouti	12,711	655	13,366
28.	Nepal	11,983	3,962	15,945
29.	United Republic of Tanzania	11,974	6,603	18,577
30.	Guinea-Bissau	11,754	655	12,409
31.	Ghana	9,143	10,564	19,707
32.	Sao Tome and Principe	8,340	655	8,995
33.	Cameroon	7,922	6,603	14,525
34.	Micronesia (Federated States of)	7,307	655	7,962
35.	Vanuatu	6,963	655	7,618
36.	Congo	6,644	3,962	10,606

	<b>State Party</b>	<b>1993-2015 Balance Outstanding</b>	<b>2016 Balance Outstanding</b>	<b>1993-2016 Total Outstanding</b>
37.	Namibia	6,600	6,603	13,203
38.	Zimbabwe	6,424	2,641	9,065
39.	Marshall Islands	6,221	655	6,876
40.	Benin	5,844	1,981	7,825
41.	Solomon Islands	4,394	655	5,049
42.	Zambia	3,960	4,622	8,582
43.	Burkina Faso	3,931	2,641	6,572
44.	Senegal	3,863	3,301	7,164
45.	Maldives	3,704	1,321	5,025
46.	Grenada	3,627	655	4,282
47.	Kiribati	3,085	655	3,740
48.	Tuvalu	2,233	655	2,888
49.	Mongolia	1,985	3,301	5,286
50.	Swaziland	1,980	1,321	3,301
51.	Togo	1,979	655	2,634
52.	Mauritania	1,914	1,321	3,235
53.	Somalia	1,722	655	2,377
54.	Eritrea	1,318	655	1,973
55.	Gambia	1,318	655	1,973
56.	Timor-Leste	1,274	1,981	3,255
57.	Cabo Verde	892	655	1,547
58.	Lesotho	655	655	1,310
59.	Belize	639	655	1,294
60.	Madagascar	422	1,981	2,403
61.	Palau	216	655	871
62.	Saint Kitts and Nevis	194	655	849
63.	Bahrain	59	29,052	29,111
64.	Saint Lucia	32	655	687
65.	Cook Islands	28	655	683
66.	Honduras	21	5,282	5,303
67.	Niue	15	655	670
68.	Equatorial Guinea	1	6,603	6,604
69.	China	-	5,229,976	5,229,976
70.	Japan	-	4,645,841	4,645,841
71.	Italy	-	2,474,682	2,474,682
72.	Germany	-	2,109,224	2,109,224
73.	Spain	-	1,613,034	1,613,034
74.	Republic of Korea	-	1,346,285	1,346,285

	<b>State Party</b>	<b>1993-2015 Balance Outstanding</b>	<b>2016 Balance Outstanding</b>	<b>1993-2016 Total Outstanding</b>
75.	Mexico	-	947,483	947,483
76.	Saudi Arabia	-	756,666	756,666
77.	Argentina	-	588,958	588,958
78.	Poland	-	555,285	555,285
79.	Greece	-	310,986	310,986
80.	Portugal	-	258,825	258,825
81.	Romania	-	121,489	121,489
82.	Algeria	-	106,303	106,303
83.	Peru	-	86,944	86,944
84.	Iraq	-	85,174	85,174
85.	Ukraine	-	68,008	68,008
86.	Croatia	-	65,366	65,366
87.	Uruguay	-	52,161	52,161
88.	Ecuador	-	44,238	44,238
89.	Azerbaijan	-	39,616	39,616
90.	Viet Nam	-	38,295	38,295
91.	Morocco	-	35,654	35,654
92.	Lebanon	-	30,372	30,372
93.	Trinidad and Tobago	-	22,449	22,449
94.	Panama	-	21,834	21,834
95.	Serbia	-	21,129	21,129
96.	Tunisia	-	18,487	18,487
97.	Jordan	-	13,205	13,205
98.	Guatemala	-	13,113	13,113
99.	Bolivia (Plurinational State of)	-	7,923	7,923
100.	Bangladesh	-	6,603	6,603
101.	Ethiopia	-	6,603	6,603
102.	Myanmar	-	6,603	6,603
103.	Uganda	-	5,918	5,918
104.	Uzbekistan	-	4,209	4,209
105.	Andorra	-	3,962	3,962
106.	Suriname	-	3,962	3,962
107.	Cambodia	-	2,641	2,641
108.	Papua New Guinea	-	2,641	2,641
109.	Republic of Moldova	-	2,641	2,641
110.	Mozambique	-	2,593	2,593
111.	Lao People's Democratic Republic	-	1,981	1,981
112.	Fiji	-	1,959	1,959

	<b>State Party</b>	<b>1993-2015 Balance Outstanding</b>	<b>2016 Balance Outstanding</b>	<b>1993-2016 Total Outstanding</b>
113.	Malawi	-	1,305	1,305
114.	Tajikistan	-	993	993
115.	Chad	-	445	445
116.	Pakistan	-	140	140
117.	Philippines	-	48	48
118.	Kenya	-	10	10
119.	Afghanistan	-	-	-
120.	Albania	-	-	-
121.	Angola	-	-	-
122.	Armenia	-	-	-
123.	Australia	-	-	-
124.	Austria	-	-	-
125.	Barbados	-	-	-
126.	Belarus	-	-	-
127.	Belgium	-	-	-
128.	Bhutan	-	-	-
129.	Bosnia and Herzegovina	-	-	-
130.	Botswana	-	-	-
131.	Brunei Darussalam	-	-	-
132.	Bulgaria	-	-	-
133.	Burundi	-	-	-
134.	Canada	-	-	-
135.	Chile	-	-	-
136.	Costa Rica	-	-	-
137.	Côte d'Ivoire	-	-	-
138.	Cyprus	-	-	-
139.	Czech Republic	-	-	-
140.	Denmark	-	-	-
141.	Estonia	-	-	-
142.	Finland	-	-	-
143.	France	-	-	-
144.	Georgia	-	-	-
145.	Guyana	-	-	-
146.	Haiti	-	-	-
147.	Holy See	-	-	-
148.	Hungary	-	-	-
149.	Iceland	-	-	-
150.	India	-	-	-



	<b>State Party</b>	<b>1993-2015 Balance Outstanding</b>	<b>2016 Balance Outstanding</b>	<b>1993-2016 Total Outstanding</b>
151.	Indonesia	-	-	-
152.	Ireland	-	-	-
153.	Jamaica	-	-	-
154.	Kazakhstan	-	-	-
155.	Kuwait	-	-	-
156.	Latvia	-	-	-
157.	Liberia	-	-	-
158.	Liechtenstein	-	-	-
159.	Lithuania	-	-	-
160.	Luxembourg	-	-	-
161.	Malaysia	-	-	-
162.	Mali	-	-	-
163.	Malta	-	-	-
164.	Mauritius	-	-	-
165.	Monaco	-	-	-
166.	Montenegro	-	-	-
167.	Netherlands	-	-	-
168.	New Zealand	-	-	-
169.	Norway	-	-	-
170.	Oman	-	-	-
171.	Qatar	-	-	-
172.	Russian Federation	-	-	-
173.	Rwanda	-	-	-
174.	Samoa	-	-	-
175.	San Marino	-	-	-
176.	Seychelles	-	-	-
177.	Singapore	-	-	-
178.	Slovakia	-	-	-
179.	Slovenia	-	-	-
180.	South Africa	-	-	-
181.	Sri Lanka	-	-	-
182.	Sweden	-	-	-
183.	Switzerland	-	-	-
184.	Syrian Arab Republic	-	-	-
185.	Thailand	-	-	-
186.	The former Yugoslav Republic of Macedonia	-	-	-
187.	Tonga	-	-	-
188.	Turkey	-	-	-

	<b>State Party</b>	<b>1993-2015 Balance Outstanding</b>	<b>2016 Balance Outstanding</b>	<b>1993-2016 Total Outstanding</b>
189.	Turkmenistan	-	-	-
190.	United Arab Emirates	-	-	-
191.	United Kingdom of Great Britain and Northern Ireland	-	-	-
192.	United States of America	-	-	-
	<b>Total</b>	<b>5,135,942</b>	<b>25,692,242</b>	<b>30,828,184</b>

**Annex 3**

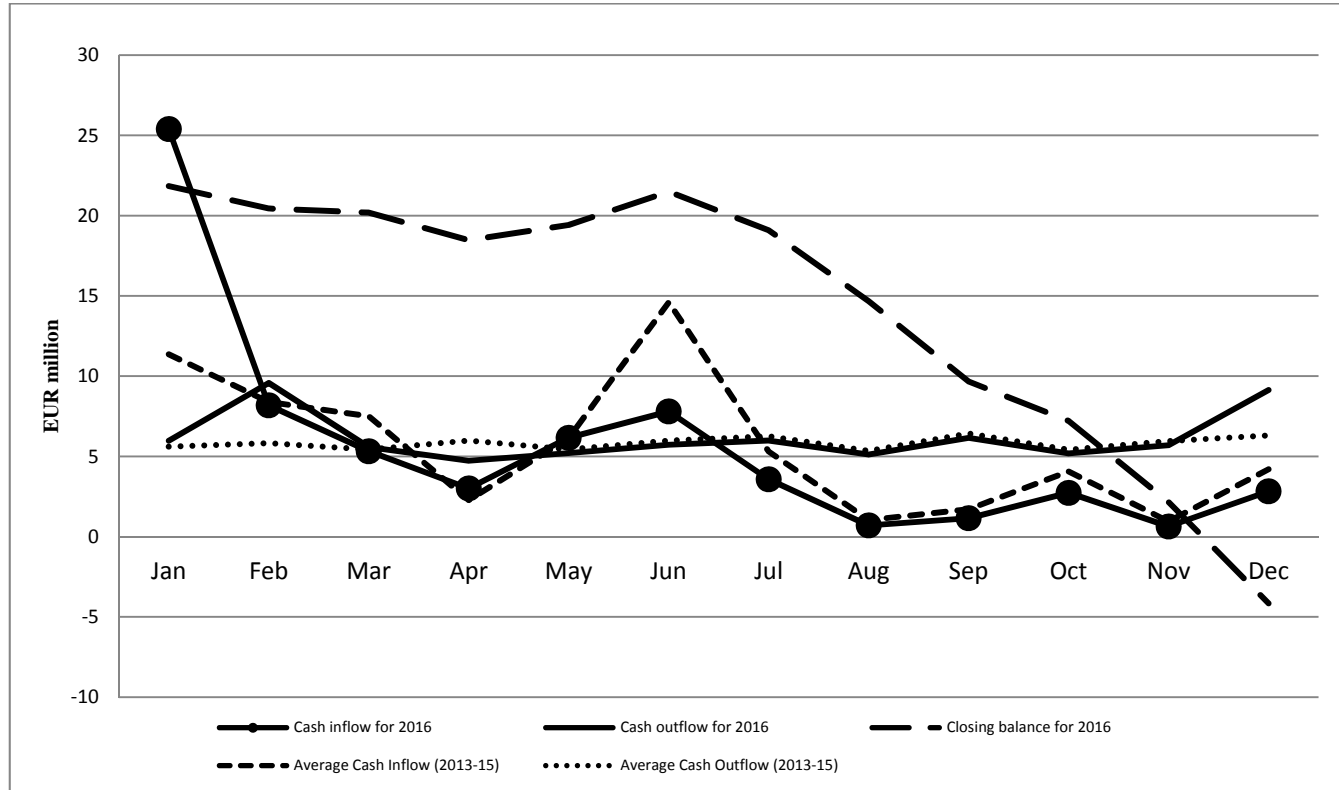
**OUTSTANDING REIMBURSEMENTS FOR INSPECTIONS INVOICED UNDER ARTICLES IV AND V  
OF THE CHEMICAL WEAPONS CONVENTION AS AT 30 APRIL 2016**

**Outstanding in the General Fund:**

	State Party	Invoiced for 1997–2015	Invoiced for 2016	Total Invoiced 1997–2016	Total Paid 1997–2016	Balance Outstanding			
						2014	2015	2016	Total
1.	Libya	1,253,335	-	1,253,335	785,356	467,979	-	-	467,979
2.	Russian Federation	24,142,242	-	24,142,242	24,142,242	-	-	-	-
3.	Syrian Arab Republic	3,956,574	-	3,956,574	-	3,263,127	693,447	-	3,956,574
4.	United States of America	42,157,228	-	42,157,228	41,979,047	-	178,409	-	178,182
	<b>Total</b>					<b>3,731,106</b>	<b>871,856</b>	-	<b>4,602,735</b>

Annex 4

CASH FLOW FORECAST FOR 2016 AND AVERAGE CASH FLOW FOR 2013 – 2015<sup>5</sup>



<sup>5</sup> See footnote 1.

## Annex 5

### MONTHLY AND ANNUAL CASH FLOW FORECAST AS AT 30 APRIL 2016<sup>6</sup>

(In EUR millions)

	Jan 2016 Actual	Feb 2016 Actual	Mar 2016 Actual	Apr 2016 Actual	May 2016 Forecast	Jun 2016 Forecast	Jul 2016 Forecast	Aug 2016 Forecast	Sep 2016 Forecast	Oct 2016 Forecast	Nov 2016 Forecast	Dec 2016 Forecast	TOTAL 2016
<b>Opening cash balance (a)</b>	2.4	21.8	20.4	20.2	18.5	19.4	21.5	19.1	14.7	9.7	7.2	2.2	2.4
<b>Total cash inflow (b)</b>	25.4	8.2	5.3	3.0	6.2	7.8	3.6	0.7	1.1	2.7	0.6	2.8	67.5
<b>Total cash available (a) + (b) = (c)</b>	27.8	30.0	25.8	23.2	24.6	27.2	25.1	19.8	15.8	12.4	7.8	5.0	69.9
<b>Total cash outflow (d)</b>	- 6.0	- 5.6	- 5.6	- 4.7	- 5.2	- 5.7	- 6.0	- 5.1	- 6.1	- 5.2	- 5.7	- 6.0	- 66.9
<b>Refund to WCF to ERP (e)</b>	-	- 4.0	-	-	-	-	-	-	-	-	-	3.1	- 7.1
<b>Closing Cash Balance (c) + (d) + (e)</b>	21.8	20.4	20.2	18.5	19.4	21.5	19.1	14.7	9.7	7.2	2.2	- 4.2	- 4.2

Major assumptions

94% assessed contributions for 2016 are collected by 31 December 2016

95% of Art IV and V budget is implemented, of which 50% is reimbursed by 31 December 2016

EUR 2.5 million of prior year's and EUR 1.3 million for future year's assessed contributions are collected by 31 December 2016

100% of the Programme and Budget for 2016 is implemented, of which 96% is disbursed by 31 December 2016

82% of 2015 unliquidated obligations are liquidated by 31 December 2016

Full refunds of VAT and United States income taxes are received by 31 December 2016

Inflow and outflow patterns based on 2013 - 2015 actual, except for some early assessed contributions for 2016 made by States Parties

Refund to ERP is made in December 2016 and no borrowing from the WCF in 2016

- - - 0 - - -

<sup>6</sup> See footnote 1. In this table there will be rounding differences.